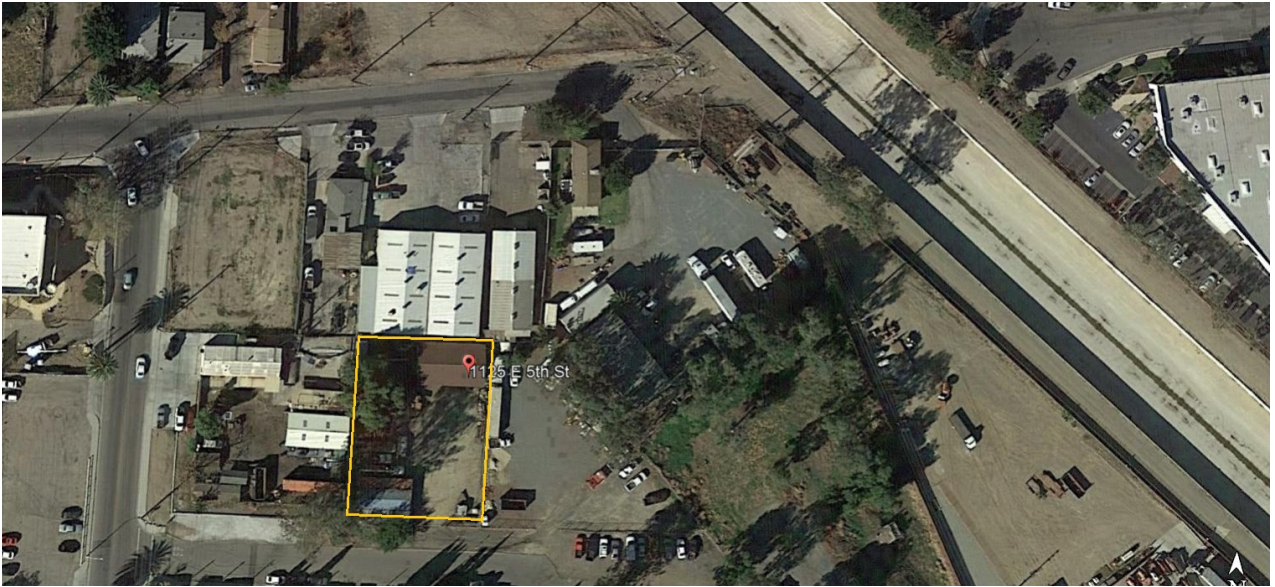


FOR LEASE



1125 E. 5th Street, Corona

Central Corona Location

Construction /Contractors Yard is a Grandfathered in use
1,500 sq. ft. (+/-) metal building with restroom, warehouse,
and small office

Approx. 20,000 sq. ft. (+/-)

Fenced in Yard

2 Storage Containers available within the yard

Asking \$3,000 per month

~ FOR MORE INFORMATION PLEASE CONTACT ~

Chad Harpole, Quint Calvert

CALVERT REAL PROPERTIES, INC.

63 W. GRAND BLVD., CORONA, CA 92882-2005

Ph: (951) 735-3266

Lic. # 00625034

check us out! @ www.calvertprops.com

Lic. # 00837577

CALVERT
Real Properties, Inc.