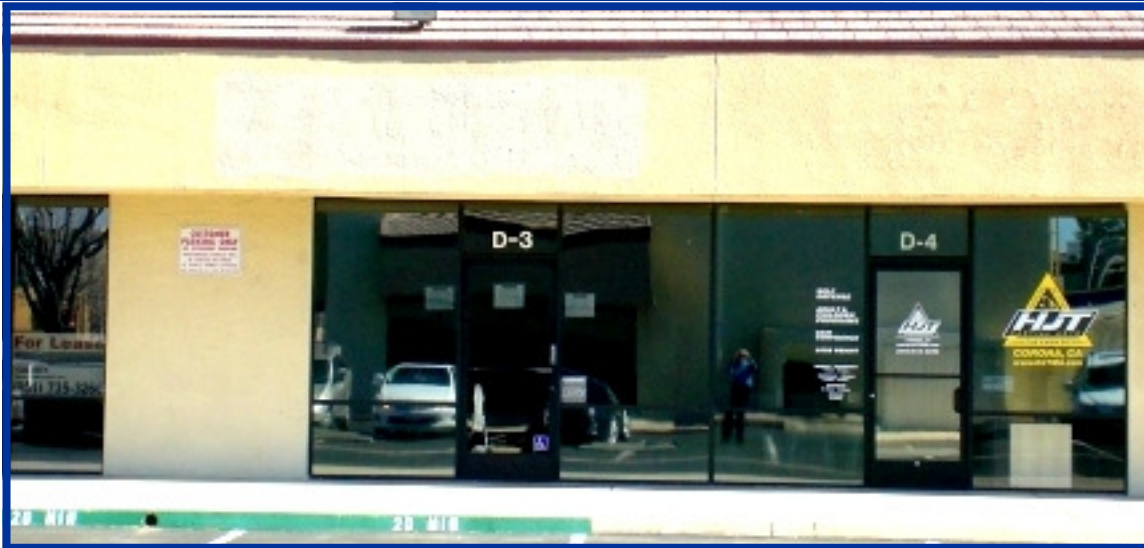


# FOR LEASE

Office/Retail Space

**623 N. Main Street, Unit D3, Corona**



## Potomac Square

**50,000 sq. ft. Retail/Office Center in Corona**

**1,360 Sq. Ft. Office/Retail**

**Or 2,720 sq. ft.**

**Huge Daytime Population**

**(59,937 people within a 3 mile radius)**

**800 Large Luxury Apartments Across the Street**

**Anchor Tenants:**

***\*Western Dental\****

***\*Dickies Outlet\****

***\*Red Wing Shoes\****

***\*Subway\****

***\*H. Salt Fish\****

**Asking \$1.30 psf + CAMs**

~ FOR MORE INFORMATION PLEASE CONTACT ~

**Calvert Real Properties, Inc.**

***Woodrow Harpole, Quint Calvert or Chad Harpole***

Lic. # 00625034

Lic. # 00837577

Lic. #01462544

63 W. GRAND BLVD., CORONA, CA 92882-2005

***Ph: (951) 735-3266***

check us out! @ [www.calvertprops.com](http://www.calvertprops.com)

The information contained herein was obtained from third parties, and it has not been independently verified by the real estate brokers. Buyers/Tenants should have the experts of their choice inspect the property and verify all information. Real Estate brokers are not qualified to act as or select experts with respect to legal, tax, environment, building construction, soils-drainage or other such matters.

# Subject Property

**A1 Available 2,208 sq. ft. \$1.95 + CAMs**

- A2 Supreme Pool Supply
- B-1A H. Salt Fish n' Chips
- B-1 Red Wing Shoe Co.
- B-2 Maki Yaki Japanese Restaurant
- B-3 Subway
- B-4 Louisiana Fried Chicken
- C-1 Sophisticated Salon
- C-2 A1 Shoes
- C-3 County Office
- C-4 Available 3,575 sq ft \$1.25 + CAMs**
- D-1 Dry Cleaners
- D-2 Available 1,360 sq. ft. \$1.30 + CAMs**
- D-3 Available 1,360 sq. ft. \$1.30 + CAMs**
- D-4 Karate Studio
- D-5 Vocational Nursing School
- D-6&7 Corona Life Services
- D-8 Labor Finders
- D-9 thru D-12 County Offices
- E-1 Nina Nails
- E-2 Dickie's Clothing Store
- E-3 Western Dental

